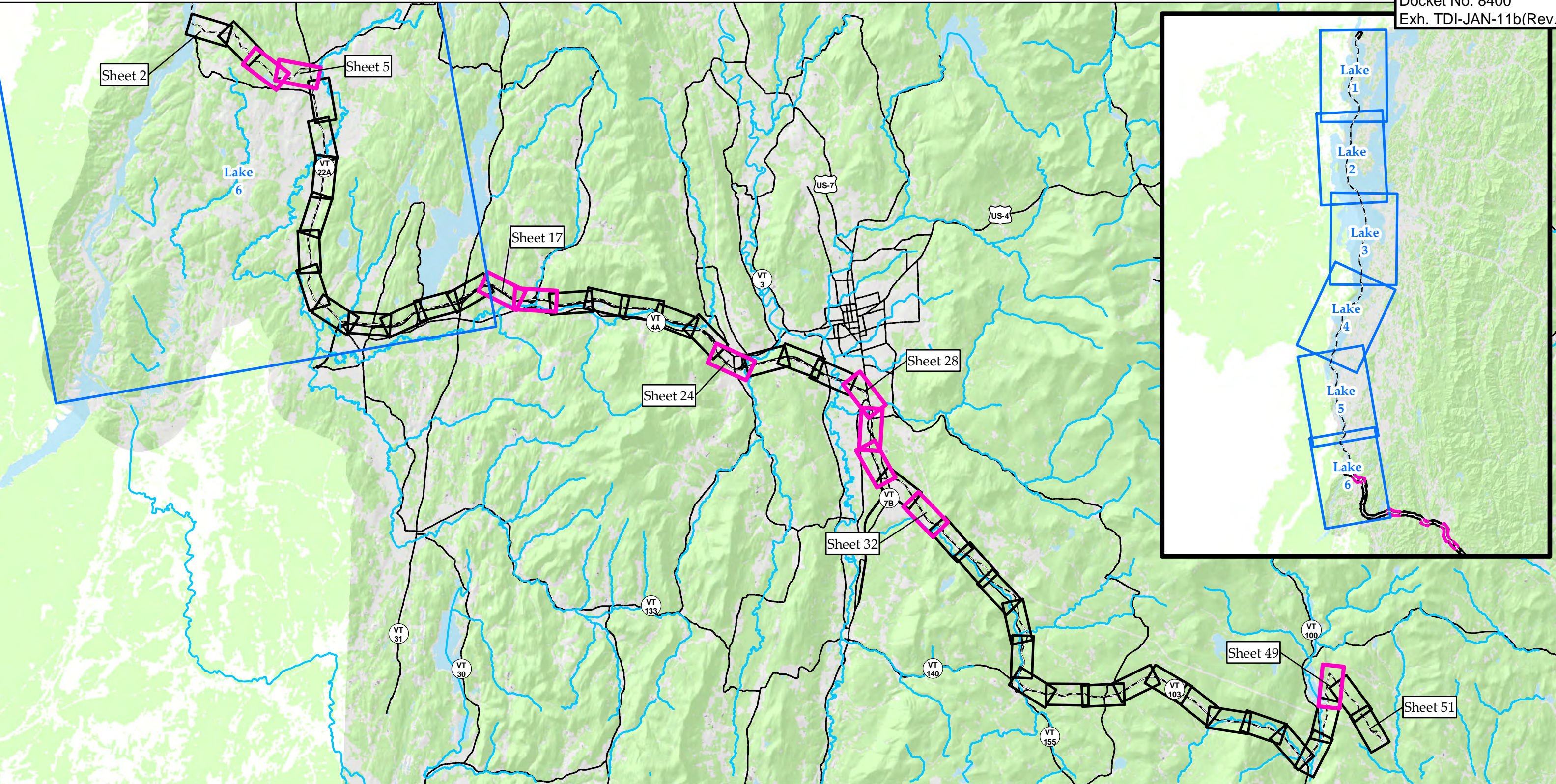


Appendix 6.1.TDI-NE.3
NECPL - Public Water Supply Maps

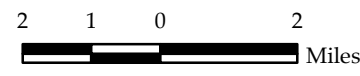


Sources: Land Use Land Cover & Hillshade provided by VCGI (2002); Statewide datasets provided by VCGI: Roads by VTrans (2013); NRCS Soils by NRCS (2008); Streams & Waterbodies by VHD (2010), County and Town Boundaries by VCGI (2012), Provided by TRC: Conceptual Project Alignment (2014)



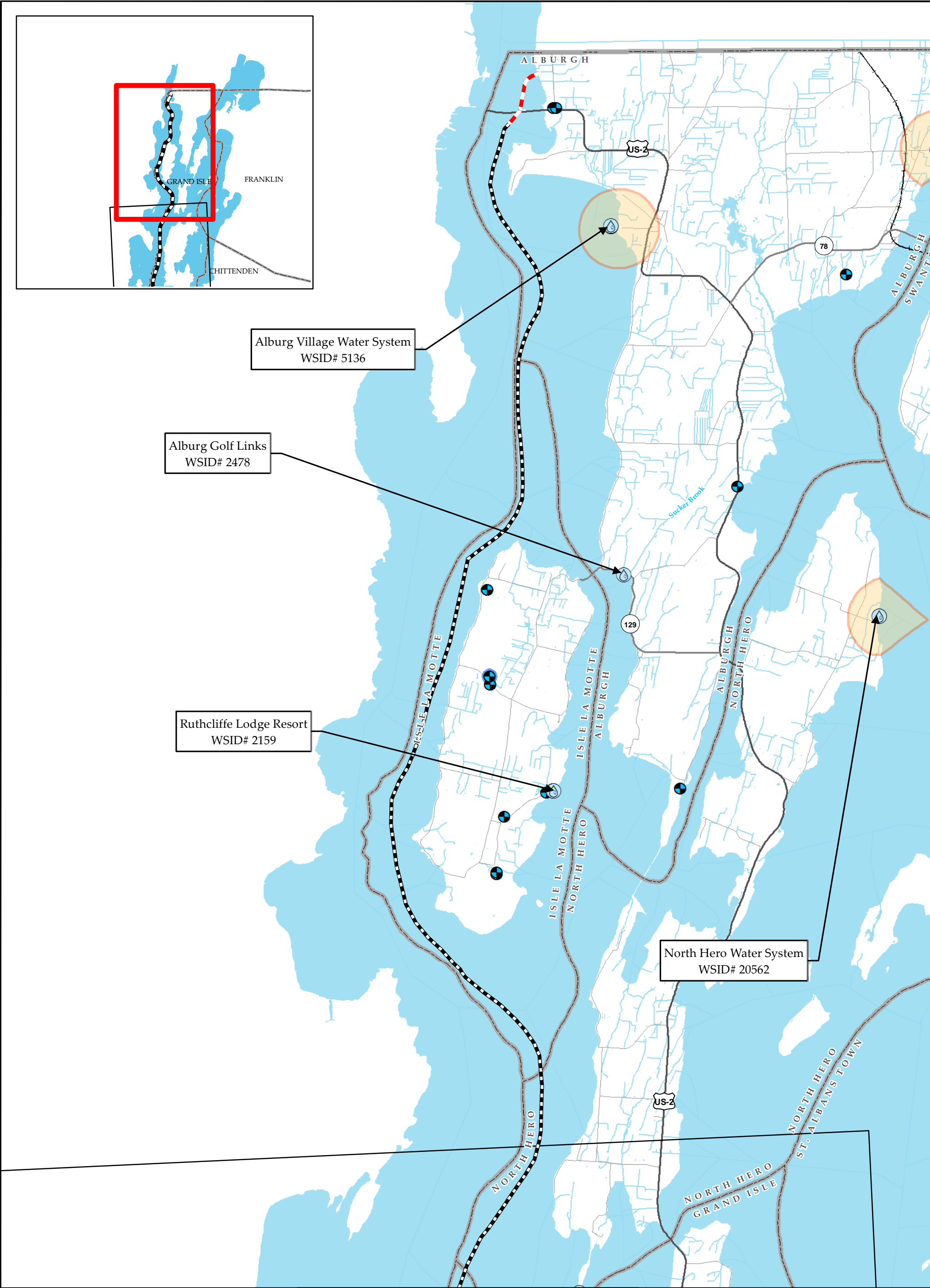
- NECPL Proposed Alignment (TRC)
- Lake Maps Sheet Outline
- Public Water Supply Sheet Outline*
- Natural Resource Sheet Outline
- Streams (VHD)
- Waterbody (VHD)
- Roads
- Town Boundary (VCGI)
- County Boundary (VCGI)

*The Public Water Supply Map Series includes map sheets #4, 5, 17, 18, 24, 28, 29, 30, 32, and 49 because these are the only map panels where the Project crosses the SPA or is near to the water source for public water systems.



TDI - NECPL Project
Grand Isle, Rutland, & Windsor Counties, VT
Natural Resource & Public Water Supply
Map Series Index

December 2, 2014



NECPL Proposed Lake Alignment (TRC)

Aquatic Route

Lake HDD

Public Water Source

Surface Intake

Groundwater Source

Groundwater SPA

Surface Water SPA

Town Boundary

Stream (VHD)

Railroad

Interstate

US Highway

State Named Highway

Town Road

TDI - NECPL Project

Lake Champlain, Vermont Component

Grand Isle, Rutland, & Windsor Counties, VT

Public Water Supply Map Series

December 2, 2014

Revised: July 2, 2015

Page 1 of 6

1.50.7501.5

Miles

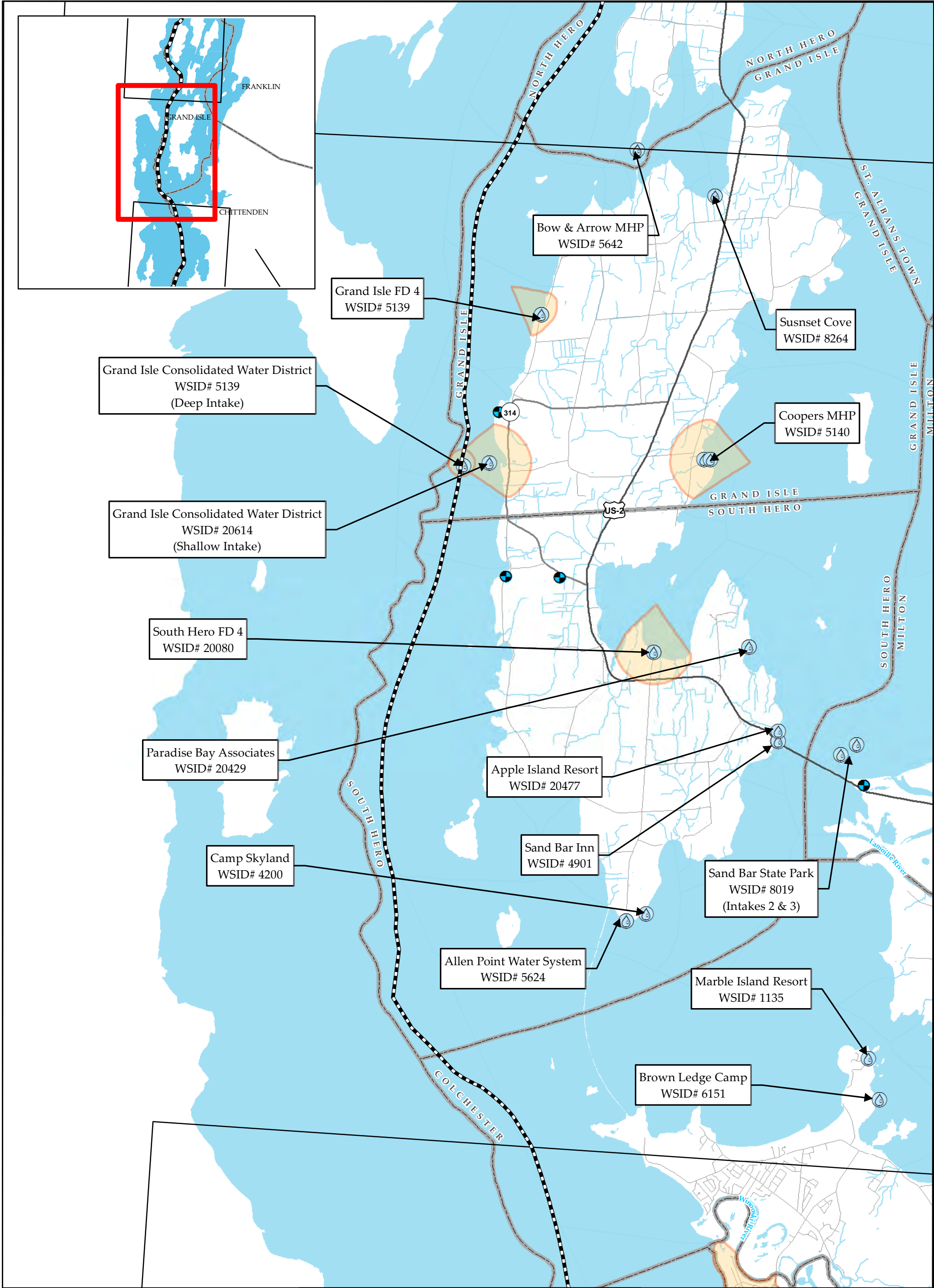
Sources: Groundwater SPAs provided by ANR (2014); Surface SPAs by ANR (2014); Roads by VTrans (2009); Streams & Waterbodies by VHD; Town boundaries (2008); Proposed Lake Alignment provided by TRC (2014); Public Water Sources from ANR (2014) except for Grand Isle Consolidated Water District (WSID# 5139) from "Withdraw Pipe Plan - Vermont Fish Hatchery at Grand Isle - Sheet M-1" by Sargent, Webster, Crenshaw and Folley (Project 88-309F).

TRC

Results you can rely on

vhb

\\VTNFDATA\projects\57666.00 NE Clean Power Link\GIS\Project\Working\Lake_PWS_11x17_120214.mxd exported by:acoplin On 8/10/2015



NECPL Proposed Lake Alignment (TRC)

Aquatic Route

Lake HDD

Public Water Source

Surface Intake

Groundwater Source

Groundwater SPA

Surface Water SPA

Town Boundary

Stream (VHD)

Railroad

Interstate

US Highway

State Named Highway

Town Road

TDI - NECPL Project

Lake Champlain, Vermont Component

Grand Isle, Rutland, & Windsor Counties, VT

Public Water Supply Map Series

December 2, 2014

Revised: July 2, 2015

Page 2 of 6

1.50.7501.5

Miles

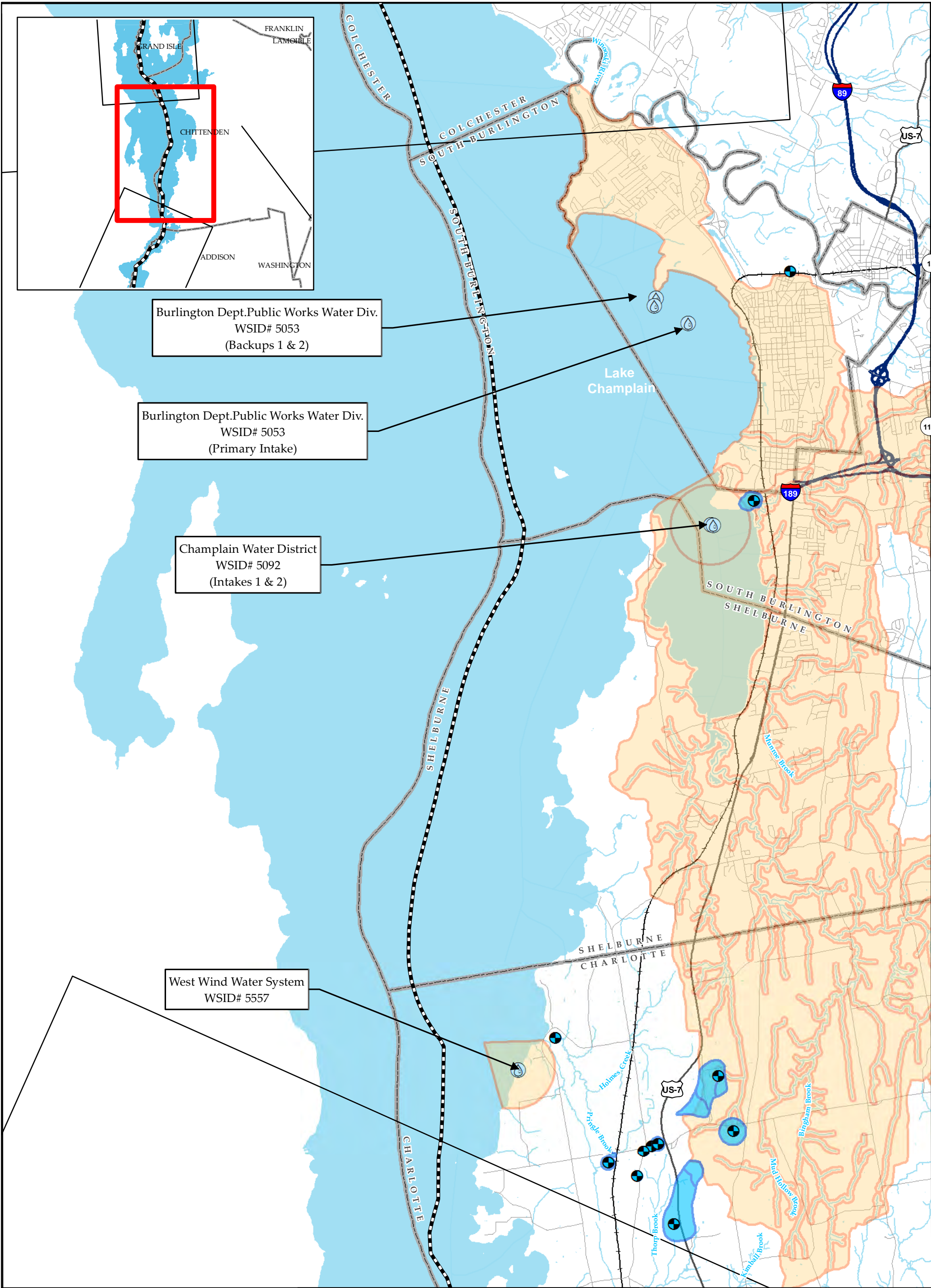
Sources: Groundwater SPAs provided by ANR (2014); Surface SPAs by ANR (2014), Roads by VTrans (2009), Streams & Waterbodies by VHD, Town boundaries (2008); Proposed Lake Alignment provided by TRC (2014); Public Water Sources from ANR (2014) except for Grand Isle Consolidated Water District (WSID# 5139) from "Withdraw Pipe Plan - Vermont Fish Hatchery at Grand Isle - Sheet M-1" by Sargent, Webster, Crenshaw and Folley (Project 88-309F).

TRC

Results you can rely on

vhb

\\VTNFDATA\projects\57666.00 NE Clean Power Link\GIS\Project\Working\Lake_PWS_11x17_120214.mxd exported by:acoplin On 8/10/2015



NECPL Proposed Lake Alignment (TRC)	Town Boundary
Aquatic Route	Stream (VHD)
Lake HDD	Railroad
Public Water Source	Interstate
Surface Intake	US Highway
Groundwater Source	State Named Highway
Groundwater SPA	Town Road
Surface Water SPA	

TDI - NECPL Project
Lake Champlain, Vermont Component
Grand Isle, Rutland, & Windsor Counties, VT
Public Water Supply Map Series

December 2, 2014
Revised: July 2, 2015

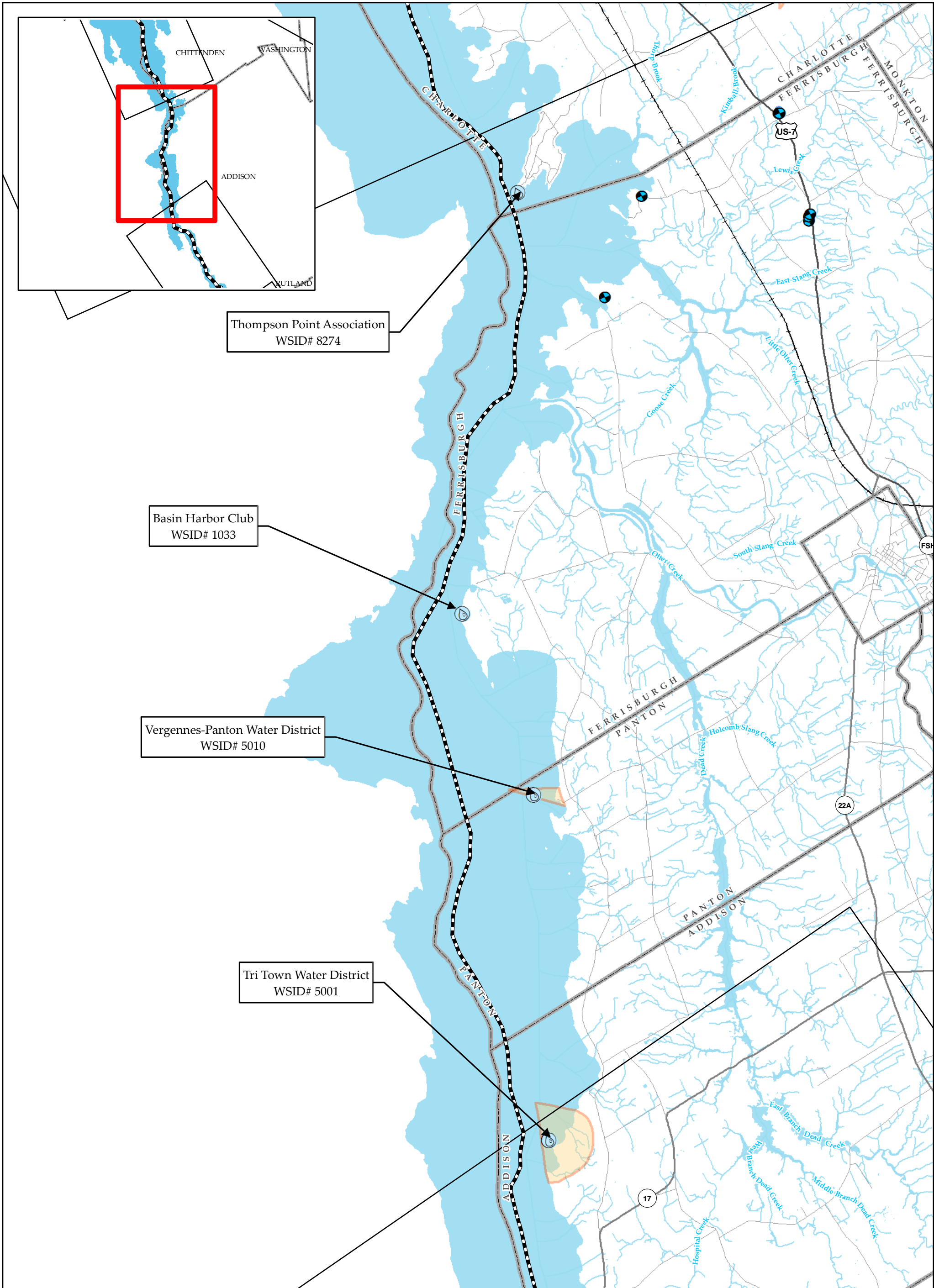
Page 3 of 6

1.5 0.75 0 1.5
Miles

Sources: Groundwater SPAs provided by ANR (2014); Surface SPAs by ANR (2014); Roads by VTrans (2009); Streams & Waterbodies by VHD; Town boundaries (2008); Proposed Lake Alignment provided by TRC (2014); Public Water Sources from ANR (2014) except for Grand Isle Consolidated Water District (WSID# 5139) from "Withdraw Pipe Plan - Vermont Fish Hatchery at Grand Isle - Sheet M-1" by Sargent, Webster, Crenshaw and Folley (Project 88-309F).

TRC
Results you can rely on

vhb



NECPL Proposed Lake Alignment (TRC)

Aquatic Route

Lake HDD

Public Water Source

Surface Intake

Groundwater Source

Groundwater SPA

Surface Water SPA

Town Boundary

Stream (VHD)

Railroad

Interstate

US Highway

State Named Highway

Town Road

TDI - NECPL Project

Lake Champlain, Vermont Component

Grand Isle, Rutland, & Windsor Counties, VT

Public Water Supply Map Series

December 2, 2014

Revised: July 2, 2015

Page 4 of 6

1.50.7501.5

Miles

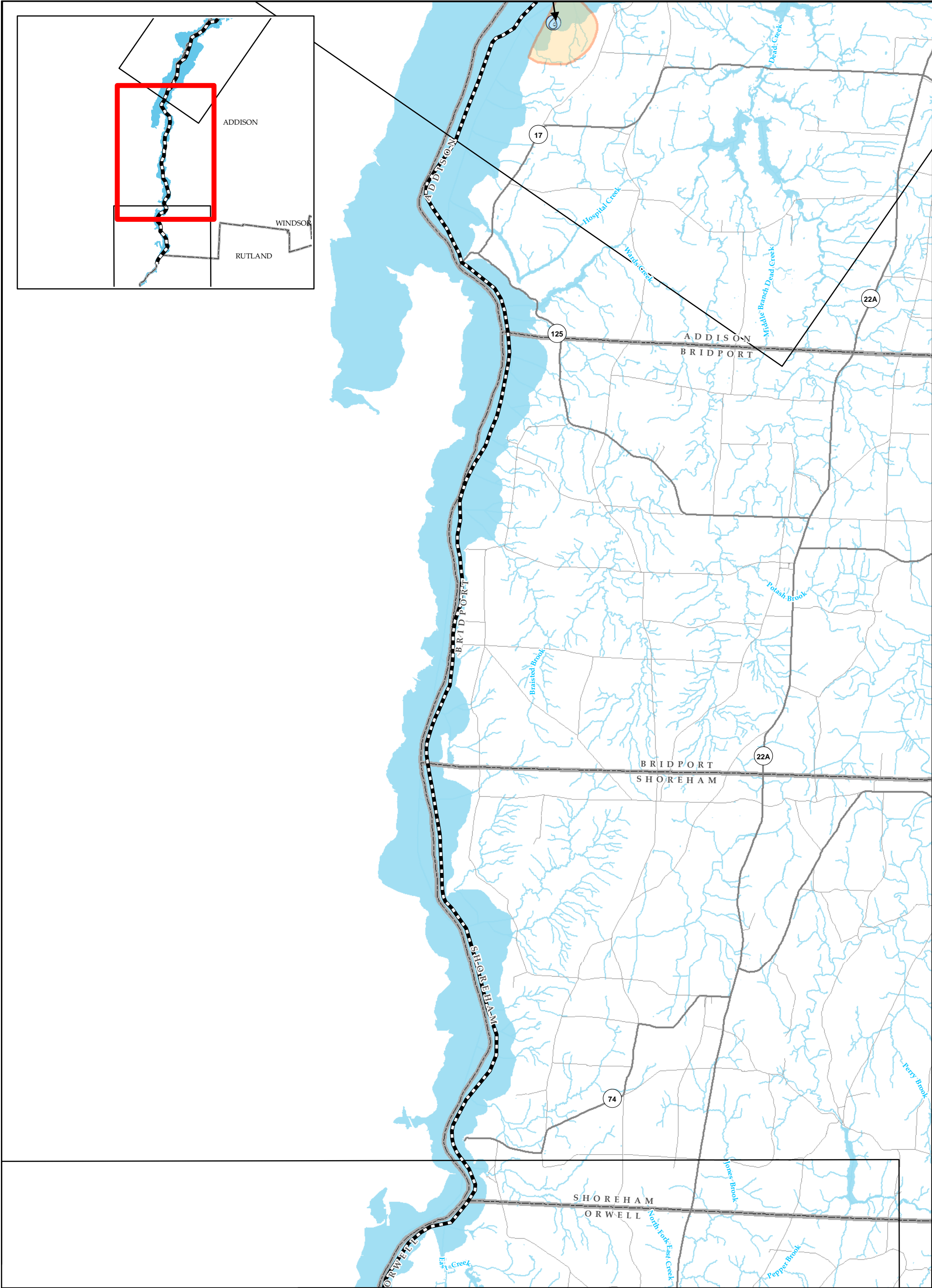
Sources: Groundwater SPAs provided by ANR (2014); Surface SPAs by ANR (2014), Roads by VTrans (2009), Streams & Waterbodies by VHD, Town boundaries (2008); Proposed Lake Alignment provided by TRC (2014); Public Water Sources from ANR (2014) except for Grand Isle Consolidated Water District (WSID# 5139) from "Withdraw Pipe Plan - Vermont Fish Hatchery at Grand Isle - Sheet M-1" by Sargent, Webster, Crenshaw and Folley (Project 88-309F).

TRC

Results you can rely on

vhb

\\VTNFDATA\projects\57666.00 NE Clean Power Link\GIS\Project\Working\Lake_PWS_11x17_120214.mxd exported by:acoplin On 8/10/2015



NECPL Proposed Lake Alignment (TRC)

Aquatic Route

Lake HDD

Public Water Source

Surface Intake

Groundwater Source

Groundwater SPA

Surface Water SPA

Town Boundary

Stream (VHD)

Railroad

Interstate

US Highway

State Named Highway

Town Road

TDI - NECPL Project

Lake Champlain, Vermont Component

Grand Isle, Rutland, & Windsor Counties, VT

Public Water Supply Map Series

December 2, 2014

Revised: July 2, 2015

Page 5 of 6

1.50.7501.5

Miles

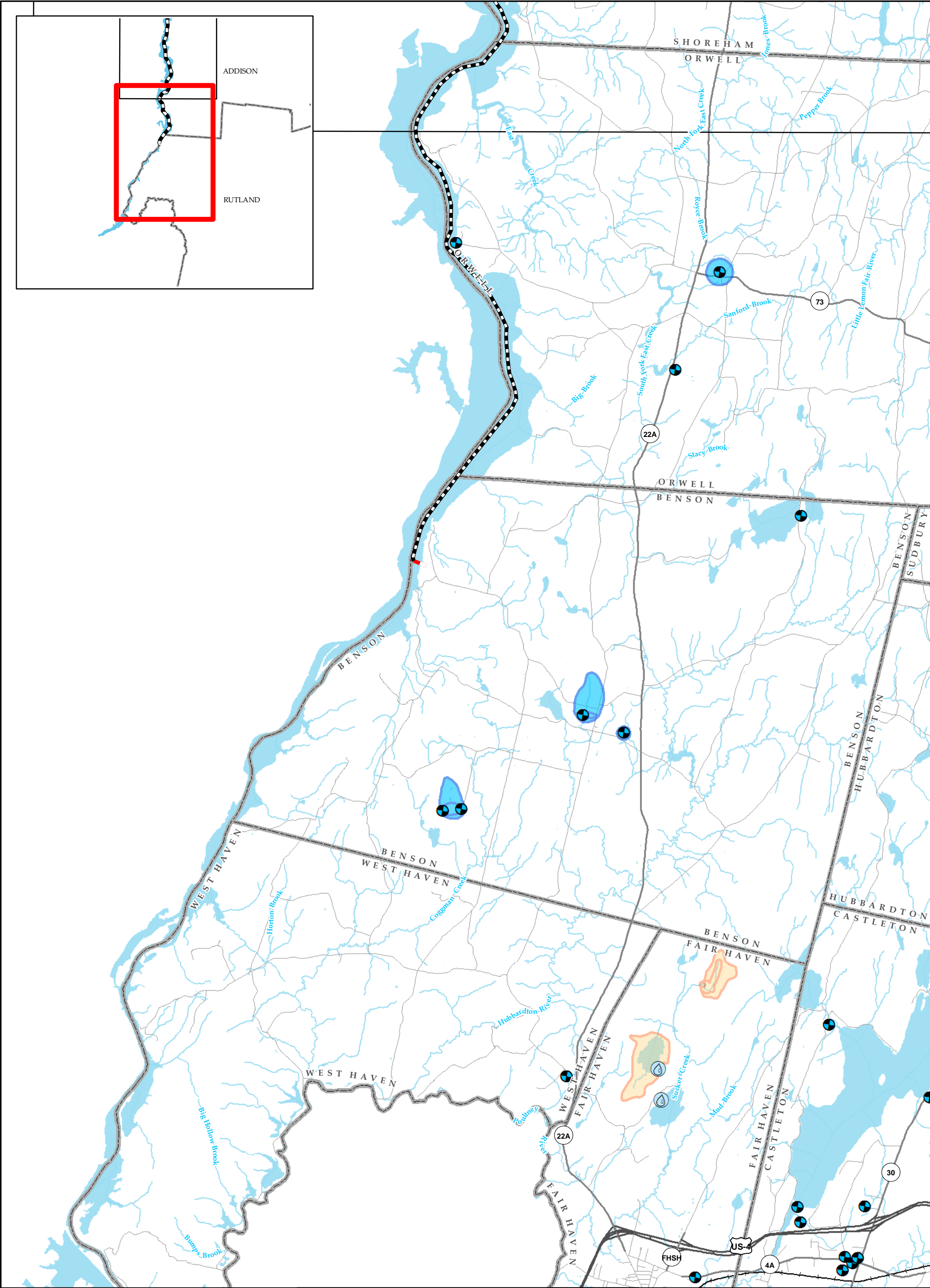
Sources: Groundwater SPAs provided by ANR (2014); Surface SPAs by ANR (2014), Roads by VTrans (2009), Streams & Waterbodies by VHD, Town boundaries (2008); Proposed Lake Alignment provided by TRC (2014); Public Water Sources from ANR (2014) except for Grand Isle Consolidated Water District (WSID# 5139) from "Withdraw Pipe Plan - Vermont Fish Hatchery at Grand Isle - Sheet M-1" by Sargent, Webster, Crenshaw and Folley (Project 88-309F).

TRC

Results you can rely on

vhb

\\VTNFDATA\projects\57666.00 NE Clean Power Link\GIS\Project\Working\Lake_PWS_11x17_120214.mxd exported by:acoplin On 8/10/2015



NECPL Proposed Lake Alignment (TRC)

Aquatic Route

Lake HDD

Public Water Source

Surface Intake

Groundwater Source

Groundwater SPA

Surface Water SPA

Town Boundary

Stream (VHD)

Railroad

Interstate

US Highway

State Named Highway

Town Road

TDI - NECPL Project

Lake Champlain, Vermont Component

Grand Isle, Rutland, & Windsor Counties, VT

Public Water Supply Map Series

December 2, 2014

Revised: July 2, 2015

Page 6 of 6

1.50.7501.5

Miles

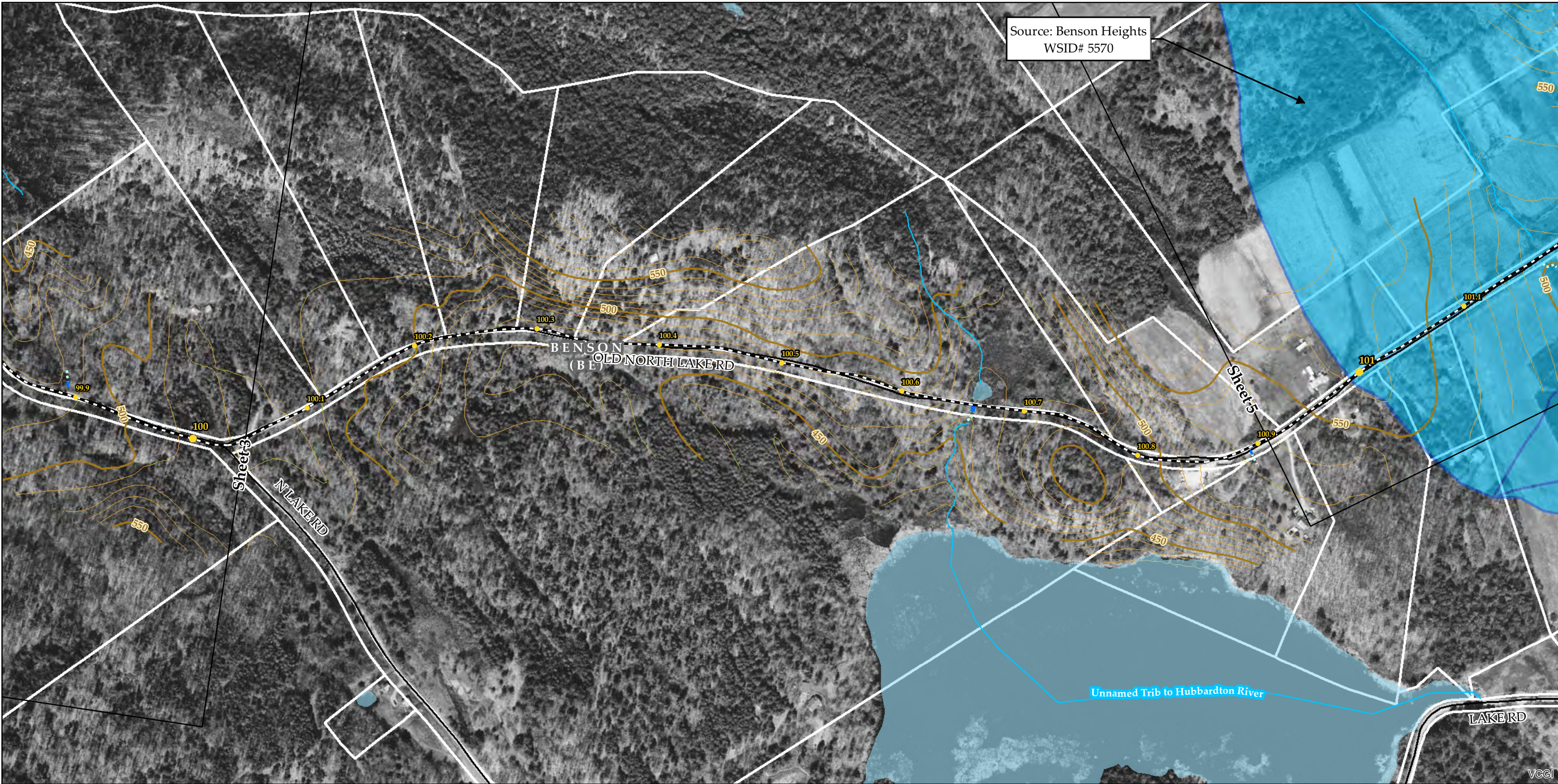
Sources: Groundwater SPAs provided by ANR (2014); Surface SPAs by ANR (2014), Roads by VTrans (2009), Streams & Waterbodies by VHD, Town boundaries (2008); Proposed Lake Alignment provided by TRC (2014); Public Water Sources from ANR (2014) except for Grand Isle Consolidated Water District (WSID# 5139) from "Withdraw Pipe Plan - Vermont Fish Hatchery at Grand Isle - Sheet M-1" by Sargent, Webster, Crenshaw and Folley (Project 88-309F).

TRC

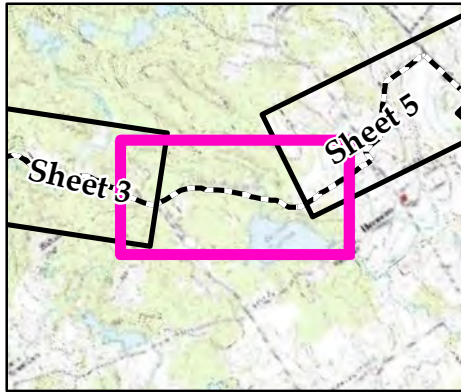
Results you can rely on

vhb

\\VTNFDATA\projects\57666.00 NE Clean Power Link\GIS\Project\Working\Lake_PWS_11x17_120214.mxd exported by:acoplin On 8/10/2015



Sources: Background provided by VCGI (2007-2013); Provided by VCGI: Roads by VTrans (2012); Streams & Waterbodies by VHD (2010), VSWI Wetlands by ANR (2013); County and Town Boundaries by VCGI (2012); Contours (2014), Conceptual Project Alignment (2015), VTrans ROW (2014), and Parcel Boundaries (2009-2013) provided by TRC; 100-year flood & Floodway compiled by TRC from FEMA (2014), Wetland & Stream Delineations by TRC & VHB (2014); Public Water Sources and SPAs from ANR (2013)



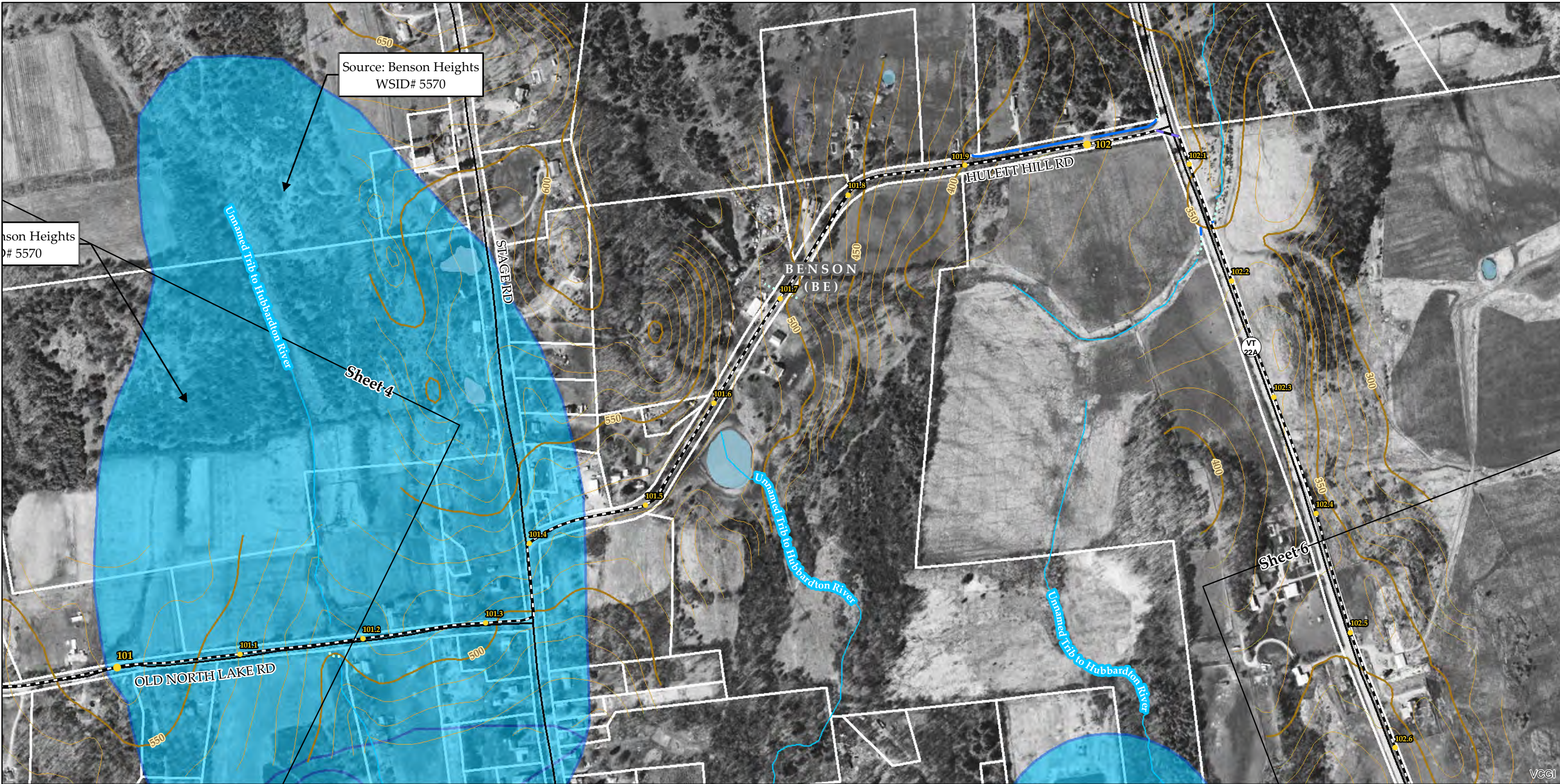
Public Water Source	Named VHD Stream	Mile Post (TRC)	Project Parcels (TRC)
Groundwater SPA	Unnamed VHD Stream	NECPL Proposed Overland Alignment (TRC)	Town Boundary (VCGI)
Surface Water SPA	Approximate Streams (TRC/VHB)	HDD	Country Boundary (VCGI)
	Delineated Streams (TRC/VHB)	Jack and Bore	Parcel Boundary (TRC)
	Waterbody (VHD)	Terrestrial Cable	Roads (VTrans)
		Sheet Outline	50 Ft. Contour
			10 Ft. Contour

TDI - NECPL Project
Overland Component
Grand Isle, Rutland, & Windsor Counties, VT
Natural Resource & Public Water Supply
Map Series

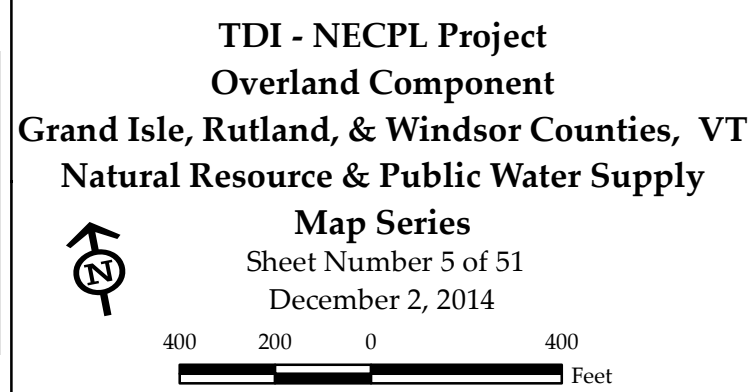
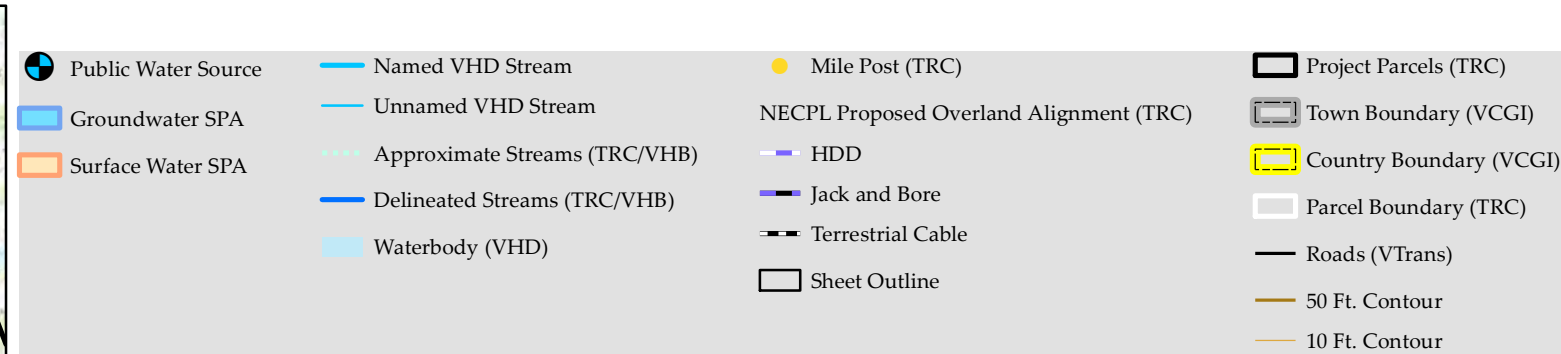
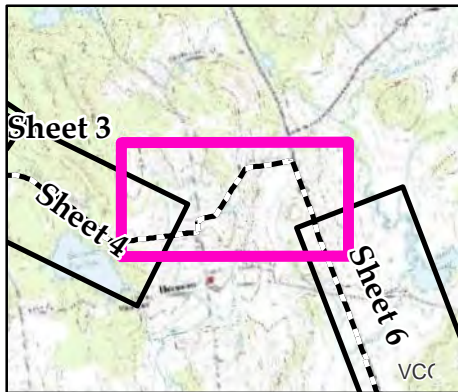
Sheet Number 4 of 51
December 2, 2014
Revised: August 6, 2015

4002000400

Feet

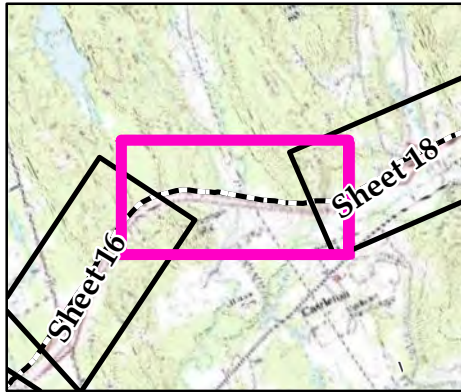


Sources: Background provided by VCGI (2007-2013); Provided by VCGI: Roads by VTrans (2012); Streams & Waterbodies by VHD (2010); VSWI Wetlands by ANR (2013); County and Town Boundaries by VCGI (2012); Contours (2014), Conceptual Project Alignment (2014), VTrans ROW (2014), and Parcel Boundaries (2009-2013) provided by TRC; 100-year flood & Floodway compiled by TRC from FEMA (2014), Wetland & Stream Delineations by TRC & VHB (2014); Public Water Sources and SPAs from ANR (2013)





Sources: Background provided by VCGI (2007-2013); Provided by VCGI: Roads by VTrans (2012); Streams & Waterbodies by VHD (2010), VSWI Wetlands by ANR (2013); County and Town Boundaries by VCGI (2012); Contours (2014), Conceptual Project Alignment (2014), VTrans ROW (2014), and Parcel Boundaries (2009-2013) provided by TRC; 100-year flood & Floodway compiled by TRC from FEMA (2014), Wetland & Stream Delineations by TRC & VHB (2014); Public Water Sources and SPAs from ANR (2013)



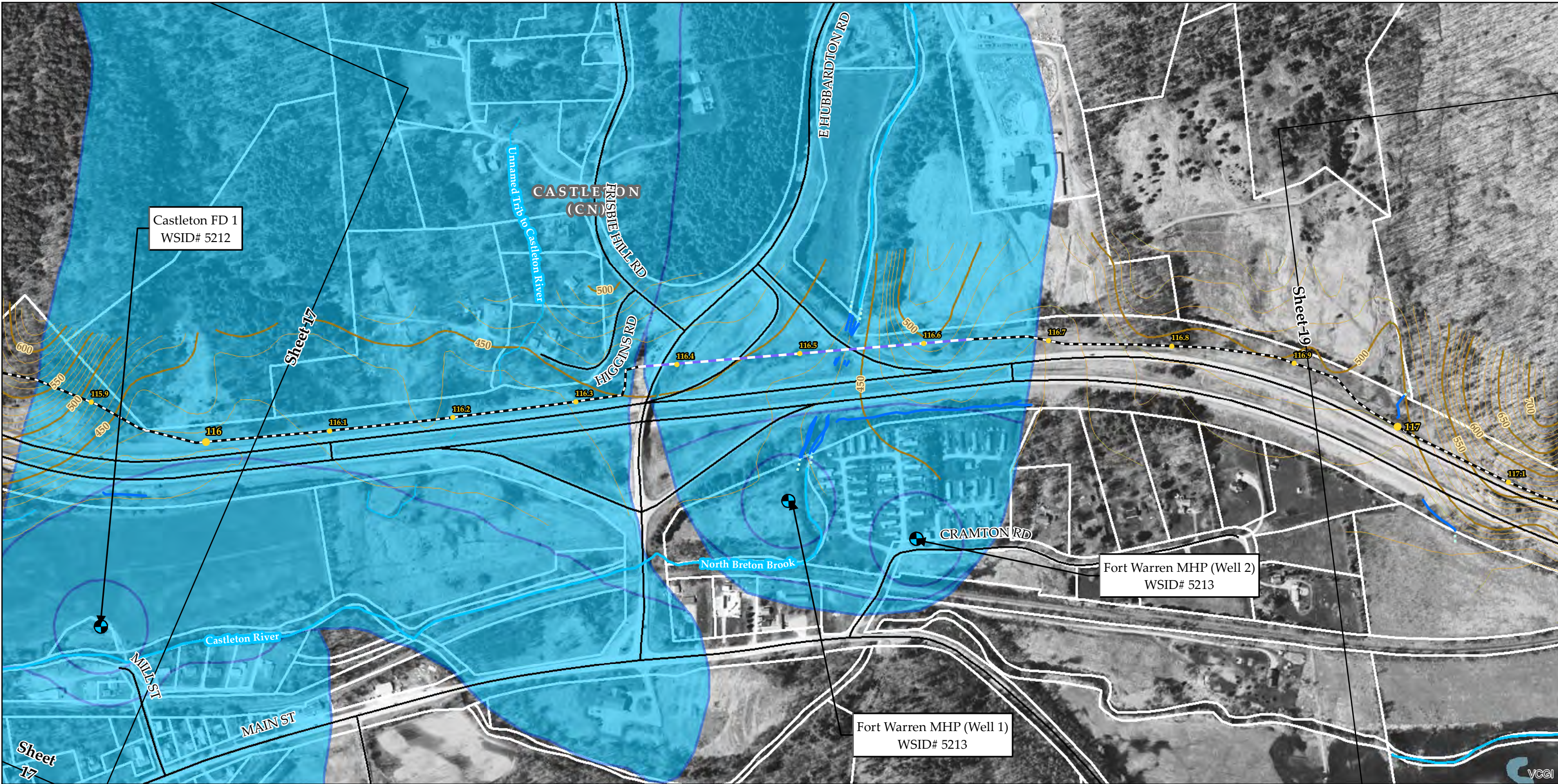
Public Water Source	Named VHD Stream	Mile Post (TRC)	Project Parcels (TRC)
Groundwater SPA	Unnamed VHD Stream	NECPL Proposed Overland Alignment (TRC)	Town Boundary (VCGI)
Surface Water SPA	Approximate Streams (TRC/VHB)	HDD	Country Boundary (VCGI)
	Delineated Streams (TRC/VHB)	Jack and Bore	Parcel Boundary (TRC)
	Waterbody (VHD)	Terrestrial Cable	Roads (VTrans)
		Sheet Outline	50 Ft. Contour
			10 Ft. Contour

TDI - NECPL Project
Overland Component
Grand Isle, Rutland, & Windsor Counties, VT
Natural Resource & Public Water Supply

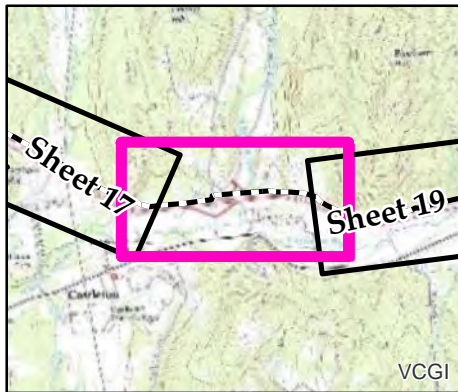
Map Series
Sheet Number 17 of 51
December 2, 2014

4002000400

Feet



Sources: Background provided by VCGI (2007-2013); Provided by VCGI: Roads by VTrans (2012); Streams & Waterbodies by VHD (2010), VSWI Wetlands by ANR (2013); County and Town Boundaries by VCGI (2012); Contours (2014), Conceptual Project Alignment (2015), VTrans ROW (2014), and Parcel Boundaries (2009-2013) provided by TRC; 100-year flood & Floodway compiled by TRC from FEMA (2014), Wetland & Stream Delineations by TRC & VHB (2014); Public Water Sources and SPAs from ANR (2013)



Public Water Source	Named VHD Stream	Mile Post (TRC)	Project Parcels (TRC)
Groundwater SPA	Unnamed VHD Stream	NECPL Proposed Overland Alignment (TRC)	Town Boundary (VCGI)
Surface Water SPA	Approximate Streams (TRC/VHB)	HDD	Country Boundary (VCGI)
	Delineated Streams (TRC/VHB)	Jack and Bore	Parcel Boundary (TRC)
	Waterbody (VHD)	Terrestrial Cable	Roads (VTrans)
		Sheet Outline	50 Ft. Contour
			10 Ft. Contour

TDI - NECPL Project
Overland Component
Grand Isle, Rutland, & Windsor Counties, VT
Natural Resource & Public Water Supply
Map Series

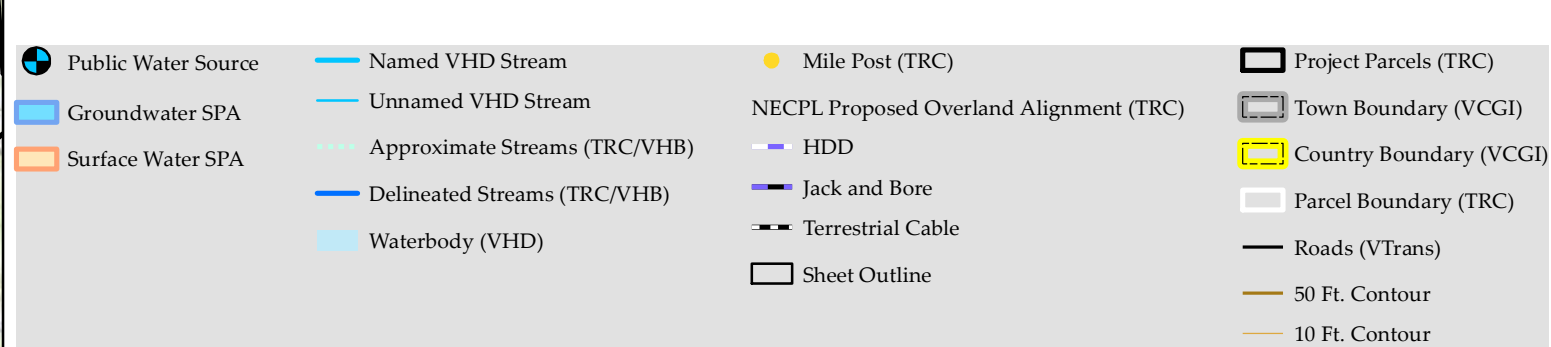
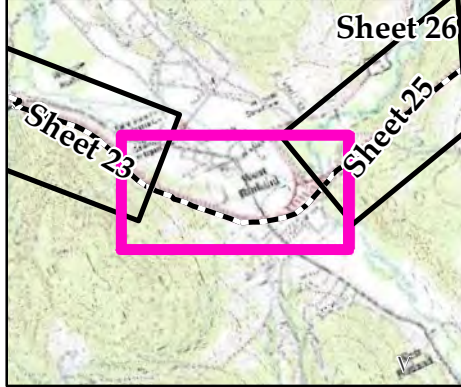
Sheet Number 18 of 51
December 2, 2014
Revised: August 6, 2015

4002000400

Feet



Sources: Background provided by VCGI (2007-2013); Provided by VCGI: Roads by VTrans (2012); Streams & Waterbodies by VHD (2010), VSWI Wetlands by ANR (2013); County and Town Boundaries by VCGI (2012); Contours (2014), Conceptual Project Alignment (2015), VTrans ROW (2014), and Parcel Boundaries (2009-2013) provided by TRC; 100-year flood & Floodway compiled by TRC from FEMA (2014), Wetland & Stream Delineations by TRC & VHB (2014); Public Water Sources and SPAs from ANR (2013)

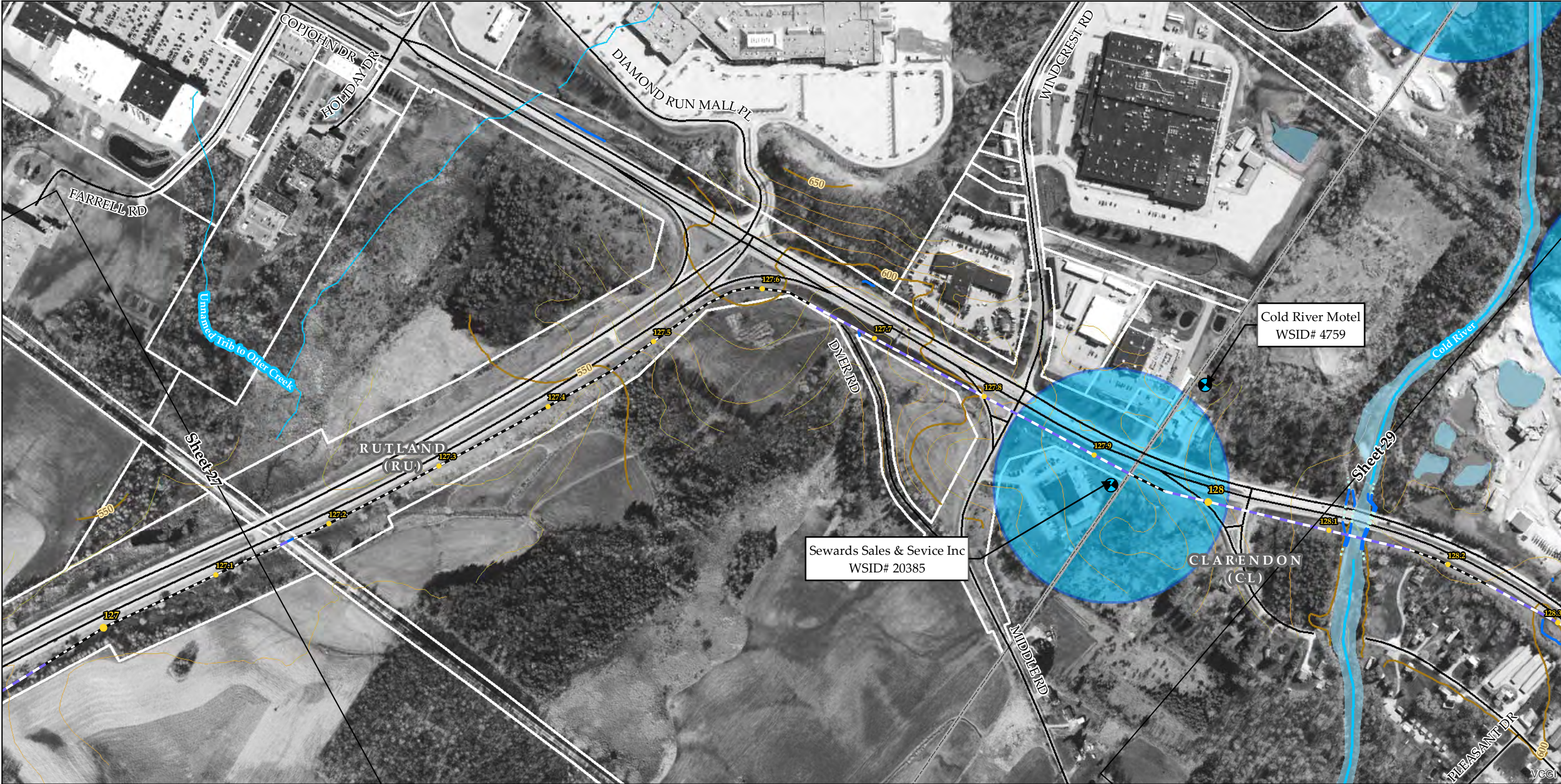


**TDI - NECPL Project
Overland Component
Grand Isle, Rutland, & Windsor Counties, VT
Natural Resource & Public Water Supply
Map Series**

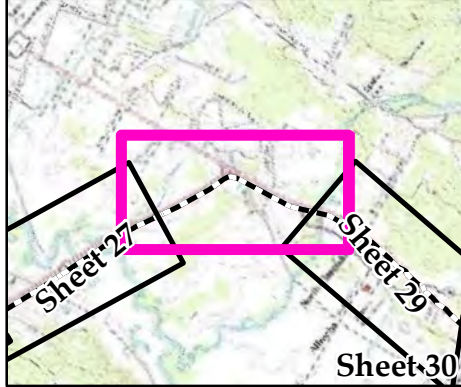
Sheet Number 24 of 51
December 2, 2014
Revised: August 6, 2015


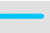


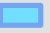
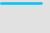

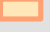
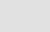
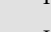



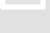
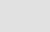

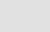
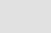


N

400 200 0 400
Feet



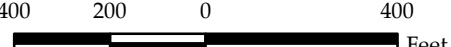

Sources: Background provided by VCGI (2007-2013); Provided by VCGI: Roads by VTrans (2012); Streams & Waterbodies by VHD (2010), VSWI Wetlands by ANR (2013); County and Town Boundaries by VCGI (2012); Contours (2014), Conceptual Project Alignment (2015), VTrans ROW (2014), and Parcel Boundaries (2009-2013) provided by TRC; 100-year flood & Floodway compiled by TRC from FEMA (2014), Wetland & Stream Delineations by TRC & VHB (2014); Public Water Sources and SPAs from ANR (2013)

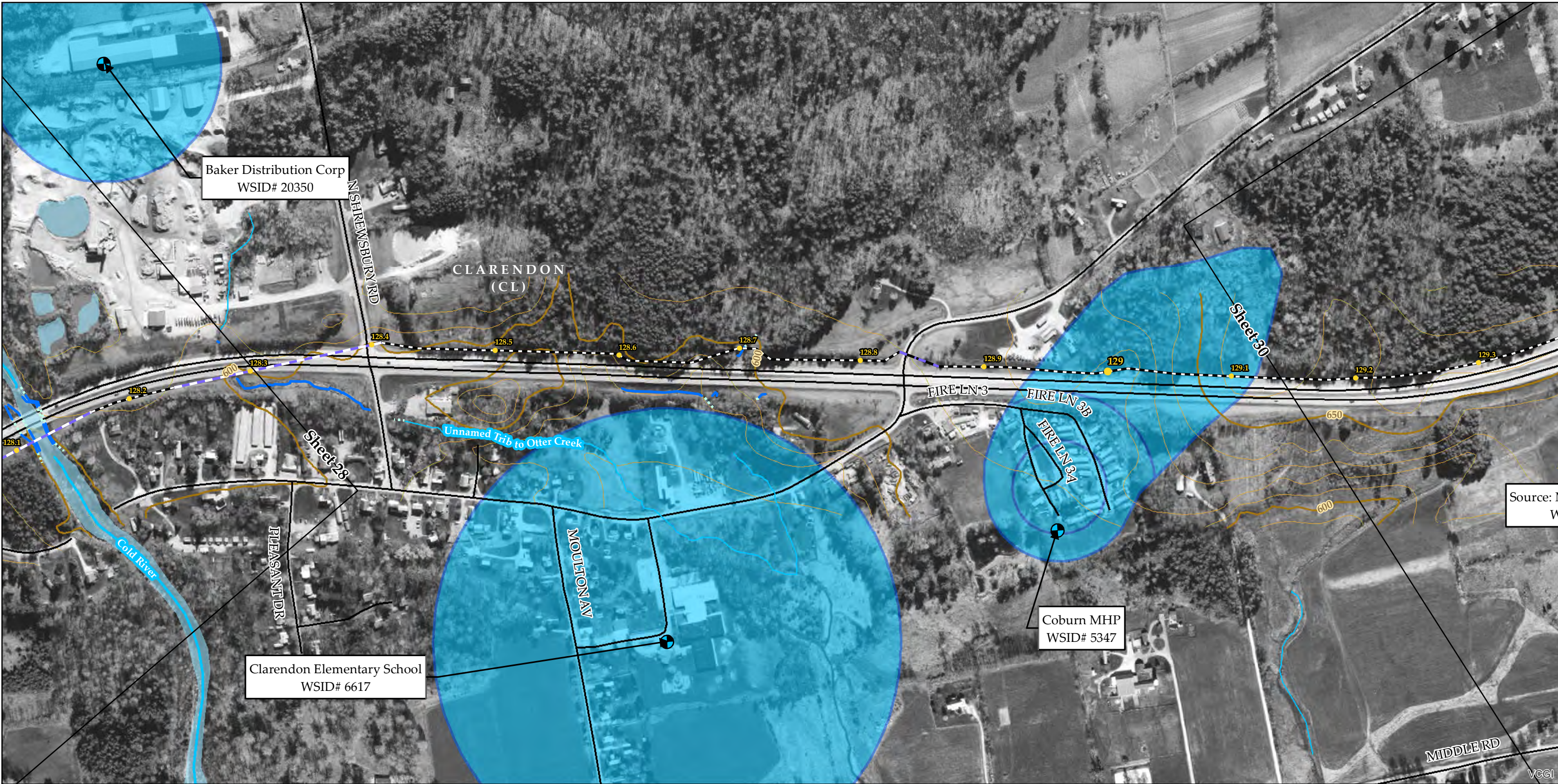


 Public Water Source	 Named VHD Stream	 Mile Post (TRC)	 Project Parcels (TRC)
 Groundwater SPA	 Unnamed VHD Stream	NECPL Proposed Overland Alignment (TRC)	 Town Boundary (VCGI)
 Surface Water SPA	 Approximate Streams (TRC/VHB)	 HDD	 Country Boundary (VCGI)
	 Delineated Streams (TRC/VHB)	 Jack and Bore	 Parcel Boundary (TRC)
	 Waterbody (VHD)	 Terrestrial Cable	 Roads (VTrans)
		 Sheet Outline	 50 Ft. Contour
			 10 Ft. Contour

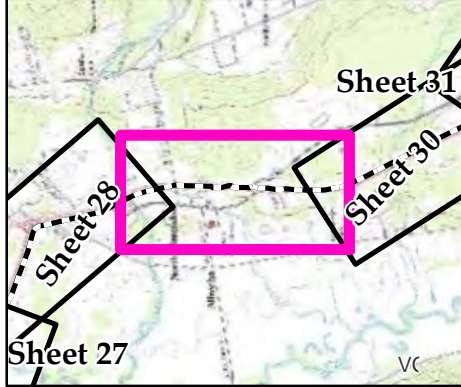
**TDI - NECPL Project
Overland Component
Grand Isle, Rutland, & Windsor Counties, VT
Natural Resource & Public Water Supply
Map Series**

Sheet Number 28 of 51
December 2, 2014
Revised: August 6, 2015





Sources: Background provided by VCGI (2007-2013); Provided by VCGI: Roads by VTrans (2012); Streams & Waterbodies by VHD (2010), VSWI Wetlands by ANR (2013); County and Town Boundaries by VCGI (2012); Contours (2014), Conceptual Project Alignment (2015), VTrans ROW (2014), and Parcel Boundaries (2009-2013) provided by TRC; 100-year flood & Floodway compiled by TRC from FEMA (2014), Wetland & Stream Delineations by TRC & VHB (2014); Public Water Sources and SPAs from ANR (2013)

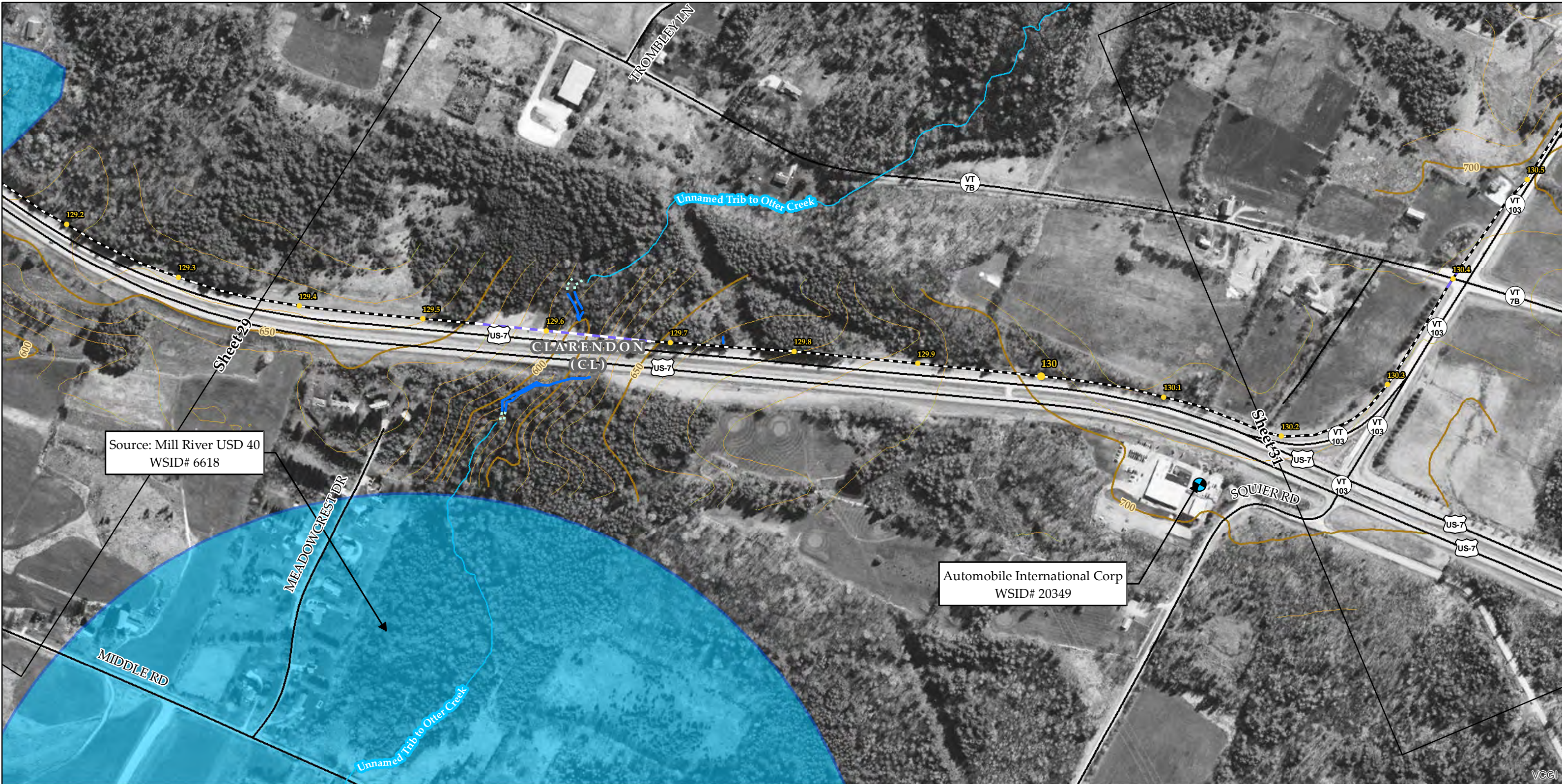


- | | | | |
|---------------------|-------------------------------|---|-------------------------|
| Public Water Source | Named VHD Stream | Mile Post (TRC) | Project Parcels (TRC) |
| Groundwater SPA | Unnamed VHD Stream | NECPL Proposed Overland Alignment (TRC) | Town Boundary (VCGI) |
| Surface Water SPA | Approximate Streams (TRC/VHB) | HDD | Country Boundary (VCGI) |
| | Delineated Streams (TRC/VHB) | Jack and Bore | Parcel Boundary (TRC) |
| | Waterbody (VHD) | Terrestrial Cable | Roads (VTrans) |
| | | Sheet Outline | 50 Ft. Contour |
| | | | 10 Ft. Contour |

**TDI - NECPL Project
Overland Component
Grand Isle, Rutland, & Windsor Counties, VT
Natural Resource & Public Water Supply
Map Series**

Sheet Number 29 of 51
December 2, 2014
Revised: August 6, 2015

400 200 0 400 Feet



Sources: Background provided by VCGI (2007-2013); Provided by VCGI: Roads by VTrans (2012); Streams & Waterbodies by VHD (2010), VSWI Wetlands by ANR (2013); County and Town Boundaries by VCGI (2012); Contours (2014), Conceptual Project Alignment (2014), VTrans ROW (2014), and Parcel Boundaries (2009-2013) provided by TRC; 100-year flood & Floodway compiled by TRC from FEMA (2014), Wetland & Stream Delineations by TRC & VHB (2014); Public Water Sources and SPAs from ANR (2013)

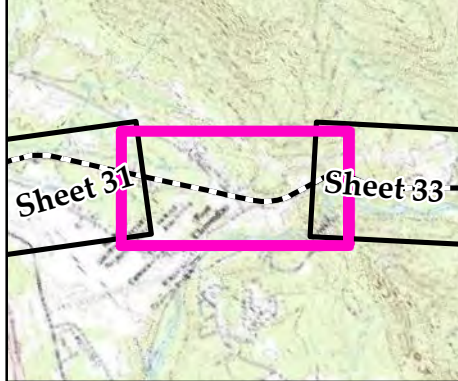
Public Water Source	Named VHD Stream	Mile Post (TRC)	Project Parcels (TRC)
Groundwater SPA	Unnamed VHD Stream	NECPL Proposed Overland Alignment (TRC)	Town Boundary (VCGI)
Surface Water SPA	Approximate Streams (TRC/VHB)	HDD	Country Boundary (VCGI)
	Delineated Streams (TRC/VHB)	Jack and Bore	Parcel Boundary (TRC)
	Waterbody (VHD)	Terrestrial Cable	Roads (VTrans)
		Sheet Outline	50 Ft. Contour
			10 Ft. Contour

**TDI - NECPL Project
Overland Component**
Grand Isle, Rutland, & Windsor Counties, VT
Natural Resource & Public Water Supply

Map Series
Sheet Number 30 of 51
December 2, 2014



Sources: Background provided by VCGI (2007-2013); Provided by VCGI: Roads by VTrans (2012); Streams & Waterbodies by VHD (2010), VSWI Wetlands by ANR (2013); County and Town Boundaries by VCGI (2012); Contours (2014), Conceptual Project Alignment (2014), VTrans ROW (2014), and Parcel Boundaries (2009-2013) provided by TRC; 100-year flood & Floodway compiled by TRC from FEMA (2014), Wetland & Stream Delineations by TRC & VHB (2014); Public Water Sources and SPAs from ANR (2013)



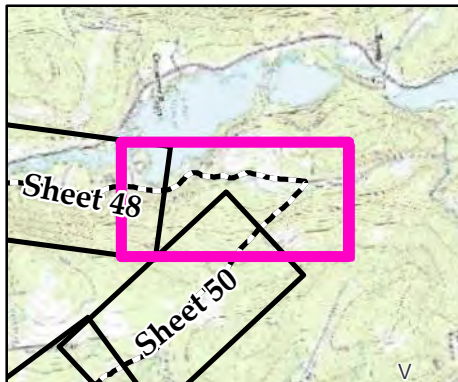
Public Water Source	Named VHD Stream	Mile Post (TRC)	Project Parcels (TRC)
Groundwater SPA	Unnamed VHD Stream	NECPL Proposed Overland Alignment (TRC)	Town Boundary (VCGI)
Surface Water SPA	Approximate Streams (TRC/VHB)	HDD	Country Boundary (VCGI)
	Delineated Streams (TRC/VHB)	Jack and Bore	Parcel Boundary (TRC)
	Waterbody (VHD)	Terrestrial Cable	Roads (VTrans)
		Sheet Outline	50 Ft. Contour
			10 Ft. Contour

TDI - NECPL Project
Overland Component
Grand Isle, Rutland, & Windsor Counties, VT
Natural Resource & Public Water Supply

Map Series
Sheet Number 32 of 51
December 2, 2014



Sources: Background provided by VCGI (2007-2013); Provided by VCGI: Roads by VTrans (2012); Streams & Waterbodies by VHD (2010); VSWI Wetlands by ANR (2013); County and Town Boundaries by VCGI (2012); Contours (2014), Conceptual Project Alignment (2014), VTrans ROW (2014), and Parcel Boundaries (2009-2013) provided by TRC; 100-year flood & Floodway compiled by TRC from FEMA (2014), Wetland & Stream Delineations by TRC & VHB (2014); Public Water Sources and SPAs from ANR (2013)



Public Water Source	Named VHD Stream	Mile Post (TRC)	Project Parcels (TRC)
Groundwater SPA	Unnamed VHD Stream	NECPL Proposed Overland Alignment (TRC)	Town Boundary (VCGI)
Surface Water SPA	Approximate Streams (TRC/VHB)	HDD	Country Boundary (VCGI)
	Delineated Streams (TRC/VHB)	Jack and Bore	Parcel Boundary (TRC)
	Waterbody (VHD)	Terrestrial Cable	Roads (VTrans)
		Sheet Outline	50 Ft. Contour
			10 Ft. Contour

TDI - NECPL Project
Overland Component
Grand Isle, Rutland, & Windsor Counties, VT
Natural Resource & Public Water Supply
Map Series
Sheet Number 49 of 51
December 2, 2014